

Selected 'Eldorado' stone veneer over
'Stone-Tite' mortar system to 7.5mm
'BGC Stonesheet' fixed with s/s screws
and Hard as Rocks Tags®

EX50x25 H3.1 vertical battens over
building wrap. Non-continuous horizontal
battens to noggs

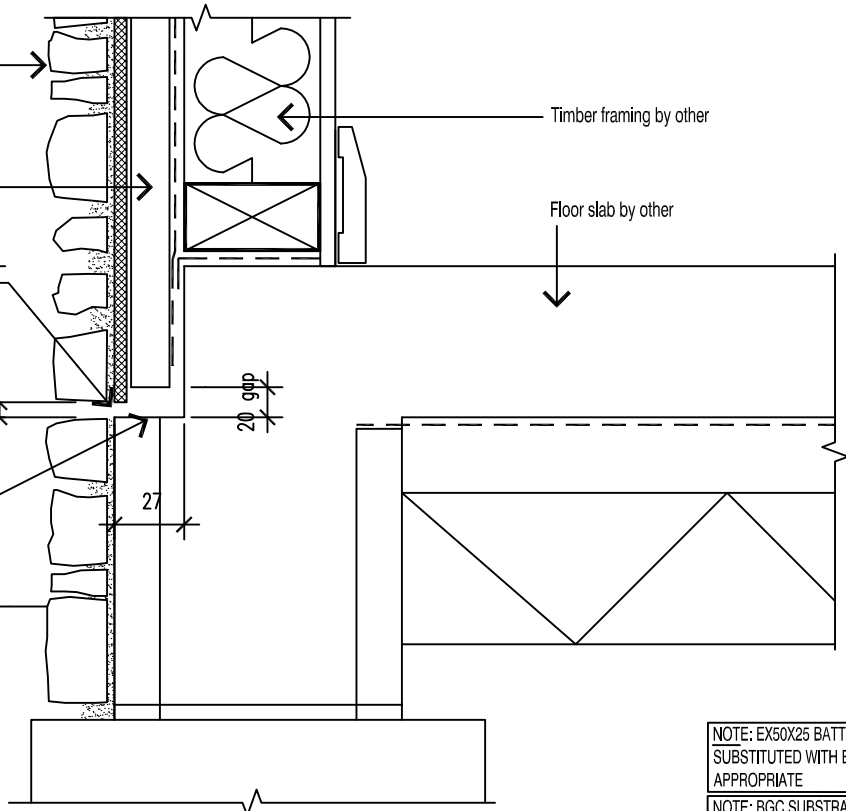
10x100mm wide horizontal
weephole at base of rebate -
approx. 600c/c

225 to FGL
150 to paving

Rebate for batten and backing sheet

Timber framing by other

Floor slab by other



NOTE: EX50x25 BATTENS CAN BE
SUBSTITUTED WITH EX50x50 WHERE
APPROPRIATE

NOTE: BGC SUBSTRATE TO BE FIXED IN
STRICT ACCORDANCE WITH
MANUFACTURER RECOMMENDATIONS
AND LITERATURE

ATTENTION BUILDING CONSENT AUTHORITIES: ALL PROJECTS MUST BE REGISTERED AT BUILDING CONSENT STAGE BY
PHONE (0800 353 672) OR E-MAIL (info@hardasrocks.co.nz) IN ORDER FOR LICENSED APPLICATORS TO TRACK AND
PRODUCER STATEMENT TO BE ISSUED UPON COMPLETION AS PER SPECIFICATION MANUAL

1b	REBATED SLAB EDGE DETAIL EX50x25 BATTENS	SCALE	DATE
		NTS	23 Apr 2009
		Hard As Rocks 0800 353672	PREFERRED DETAIL