

H3 plywood cladding over building wrap – additional battens where required

Non-Continuous double cavity batten

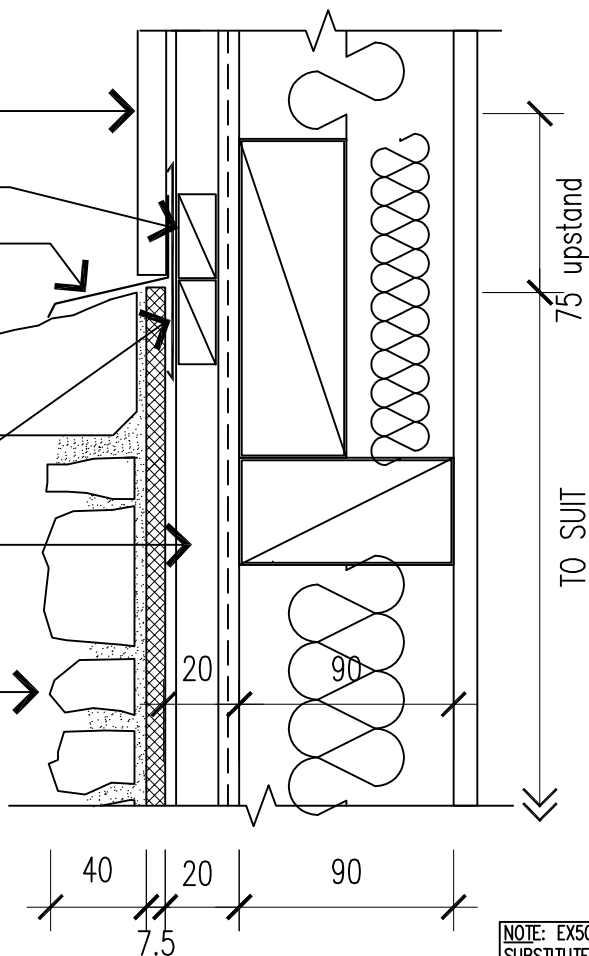
Powder Coated Flashing or similar with min 15 degree slope

Stone veneer sill fixed over 'Stone-Tite' Mortar System

PVC Back Flashing

Continuous EX50x25 H3.1 vertical battens over building wrap

Selected 'Eldorado' stone veneer over 'Stone-Tite' mortar system to 7.5mm 'BGC Stonesheet' fixed with s/s washers and screws



NOTE: EX50X25 BATTENS CAN BE SUBSTITUTED WITH EX50X50 WHERE APPROPRIATE

NOTE: BGC SUBSTRATE TO BE FIXED IN STRICT ACCORDANCE WITH MANUFACTURER RECOMMENDATIONS AND LITERATURE

ATTENTION BUILDING CONSENT AUTHORITIES: ALL PROJECTS MUST BE REGISTERED AT BUILDING CONSENT STAGE BY PHONE (0800 353 672) OR E-MAIL (info@hardasrocks.co.nz) IN ORDER FOR LICENSED APPLICATORS TO TRACK AND PRODUCER STATEMENT TO BE ISSUED UPON COMPLETION AS PER SPECIFICATION MANUAL

3p	HORIZ. JOINT WITH PLY CLADDING OVER CAVITY BATTEN WITH FLASHING	SCALE	DATE
		NTS	15 Sept 2014
		Hard As Rocks 0800 353672	