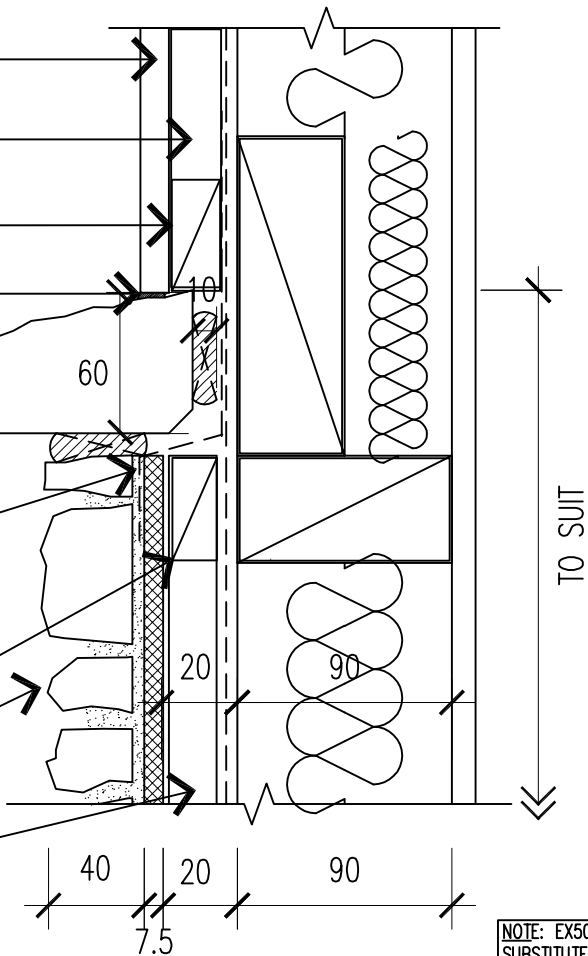


- H3 plywood cladding over building wrap – additional battens where required
- Continuous Ex 50x25 Battens
- Non continuous Ex 50x25 Batten
- Continuous flexible sealant
- Stone veneer sill fixed over 'Protecto' sill flashing with with sand/cement mortar mixed with Febond SBR adhesive daubs @ 100mm c/c
- 'Protecto' sill flashing lapped minimum 50mm onto BGC Stonesheet
- Continuous batten
- Selected 'Eldorado' stone veneer over 'Stone-Tite' mortar system to 7.5mm 'BGC Stonesheet' fixed with s/s washers and screws
- EX50x25 H3.1 vertical battens over building wrap



NOTE: EX50x25 BATTENS CAN BE SUBSTITUTED WITH EX50x50 WHERE APPROPRIATE

NOTE: BGC SUBSTRATE TO BE FIXED IN STRICT ACCORDANCE WITH MANUFACTURER RECOMMENDATIONS AND LITERATURE

ATTENTION BUILDING CONSENT AUTHORITIES: ALL PROJECTS MUST BE REGISTERED AT BUILDING CONSENT STAGE BY PHONE (0800 353 672) OR E-MAIL (info@hardasrocks.co.nz) IN ORDER FOR LICENSED APPLICATORS TO TRACK AND PRODUCER STATEMENT TO BE ISSUED UPON COMPLETION AS PER SPECIFICATION MANUAL

3m	HORIZ. JOINT WITH PLY CLADDING ON CAVITY	SCALE	DATE
		NTS	23 Apr 2009
		Hard As Rocks 0800 353672	